

REVISIONS			
LTR	DESCRIPTION	DATE	APPROVED
A	INITIAL RELEASE SEE DO 5907	C.P. 10-18-05	A.J.

D

C

B

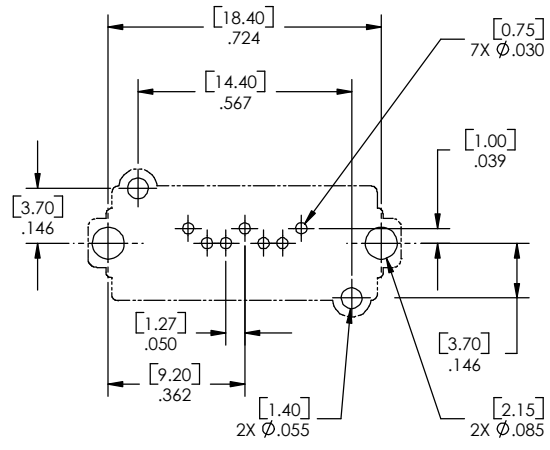
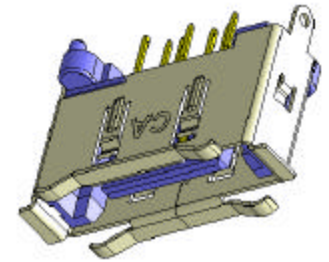
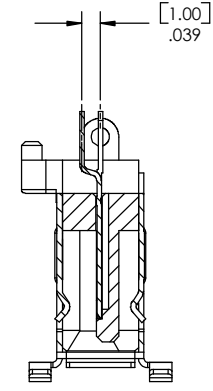
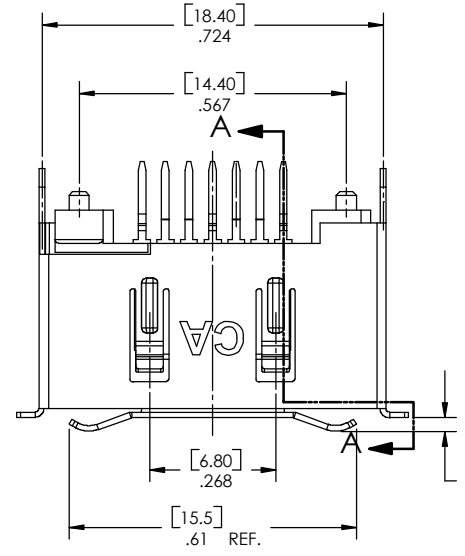
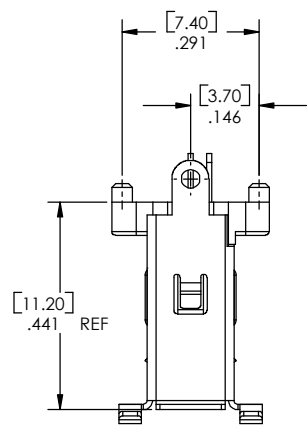
A

D

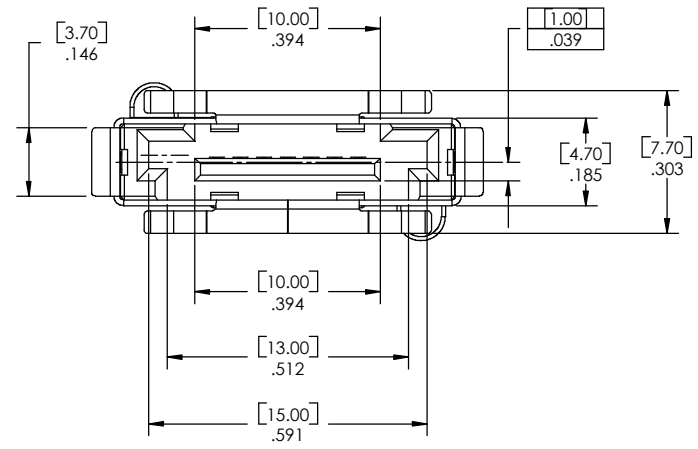
C

B

A



**RECOMMENDED PCB LAYOUT
COMPONENT SIDE SHOWN**



**ORDERING NOMENCLATURE
CA - 07 ESAP - X - 1**

NUMBER OF POSITIONS

EXTERNAL SATA PLUG - VERTICAL

PLATING

A = CONTACT AREA .00001[.000025] GOLD
C = CONTACT AREA .000015[.000381] GOLD
F = CONTACT AREA .000030[.000762] GOLD

MOUNTING
1 = THROUGH HOLE

3. PACKAGING METHOD: TRAY

2. MATERIAL

BASE: HIGH TEMPERATURE THERMOPLASTIC, COLOR: BLACK, UL94V-0
CONTACT: COPPER ALLOY
SHELL: COPPER ALLOY

FINISH

CONTACT AREA: C = .000015 [.000381] GOLD (SEE ORDERING FOR MORE OPTIONS)
SOLDER TAIL: .000100 [.00254] MIN. TIN
UNDERPLATE: .000075 [.00191] MIN. NICKEL ALL OVER
SHELL: .000075 [.000191] MIN. NICKEL

1. INTERPRET DIMENSIONS AND TOLERANCES PER ASME Y14.5M-1994

NOTES: UNLESS OTHERWISE SPECIFIED

DIMENSIONS ARE IN INCHES TOLERANCES ARE:	
DECIMALS .XX ±.010	ANGLES ±3°
DIMENSIONS IN BRACKETS [X.XX] ARE IN MILLIMETERS TOLERANCES ARE:	
DECIMALS .X ±.25	ANGLES ±3°
DO NOT SCALE DRAWING	

APPROVALS	DATE
DRAWN CUONG P.	10-17-05
CHECKED LEROY FONG	10-18-05
THE INFORMATION AND DESIGN DISCLOSED HEREIN WAS ORIGINATED BY AND IS THE PROPERTY OF CIRCUIT ASSEMBLY CORPORATION. CIRCUIT ASSEMBLY CORPORATION RESERVES ALL PATENT, PROPRIETARY, DESIGN, MANUFACTURING, REPRODUCTION, USE AND SALES RIGHTS THEREIN, AND TO ANY ARTICLE DISCLOSED HEREIN EXCEPT TO THE EXTENT RIGHTS ARE EXPRESSLY GRANTED TO OTHERS. THE FOREGOING DOES NOT APPLY TO VENDOR PROPRIETARY RIGHTS.	

CA **CIRCUIT ASSEMBLY CORP.**
18 THOMAS ST., IRVINE, CALIFORNIA 92618-2777

**CONNECTOR ASSEMBLY - EXTERNAL
SATA SERIES, CA-07ESAP-X-1**

SIZE C	CODE IDENT NO. 52072	DRAWING NO. 620496	REV. A
SCALE: 4:1		SHEET 1 OF 1	